

Wall Box Solutions

Indoor Fiber Distribution Terminals (iFDT)

The CommScope indoor fiber distribution terminal (iFDT) series provides customer premises equipment applications with a compact and secure family of enclosures for connecting fiber cables within building entrance locations, communication closets, computer rooms and other indoor environments. The iFDT products utilize a rugged double-hinged design that effectively isolates the splicing and cable termination in the rear compartment from the jumper interconnection in the front compartment. Separating the cable splicing and termination function from the interconnection function allows the unit to be used as a dual-access product with secure lockable access provided for each compartment. The layered iFDT and staggered interconnection field provides ease of access to all connections.

Sizes

The iFDT products are designed to splice and terminate fibers in a range of sizes including 6, 12, 24, 48, 72, and 96 fibers.

Mounting Applications

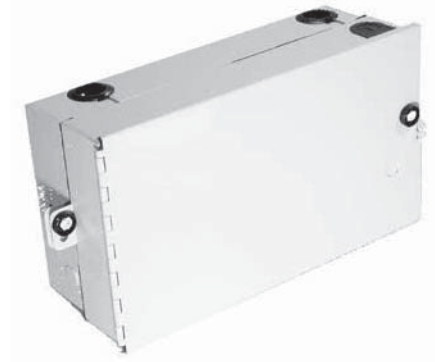
The CommScope iFDT series cabinets are for indoor wall mount applications and are designed to NEMA-12 rating. The dual hinged design allows complete front and rear access. The two secure doors are locked with a standard can wrench tool and may optionally be secured with a standard pad-lock. The unit may also be configured for single lock entry thus allowing the products to be used for single access applications.

Fiber Management

For splicing applications, CommScope's splice trays can be installed to support either individual fusion splicing or mass fusion splicing. The units provide sealed cable ports for cables and interconnection cables and gaskets to protect against dust and water spray. The units can also be configured with a standard cable grip kit to provide strain relief for incoming fiber cables. The splice compartment provides ample space for storing loose-tube, ribbon or individual fiber slack.

Features

- 12-Packs provide for high-density terminations and conserve wall space.
- Integrated splice tray offers flexible splice management for individual or mass splicing.
- Sealed enclosure protect fibers from dust, water spray, insects and other contaminants.
- Dual-hinged design ensures separation of owner/client network segments.
- Designed to NEMA-12
- Front and rear layer maximizes wall space utilization for both splicing and interconnect.
- Robust steel construction protects fibers against damage and ensures network reliability.
- Slotted cable entrance ports allow for rapid cable installation and pass-through capability.
- Cable management and routing limits bend radius and adds strain relief.
- 216-Tool (can wrench), key lock or padlock offers flexible security options.



Wall Box Solutions

Indoor Fiber Distribution Terminals (iFDT)

FDT- _____ NX _____ 0

Enclosure Type/Capacity

A	iFDT-12	12 Fiber
B	iFDT-24	24 Fiber
C	iFDT-48	48 Fiber
D	iFDT-72	72 Fiber
E	iFDT-96	96 Fiber

Connector/Adapter Style

Singlemode	
J	SC/APC
N	SC/UPC
K	LC/UPC
Multimode	
9	MMSC
6	MMLC

Splice Tray

0	No Tray
2	Heat Shrink Fusion
3	Mechanical/Ribbon

Fiber Count

06	6 Fiber
12	12 Fiber
24	24 Fiber
48	48 Fiber
72	72 Fiber
96	96 Fiber

Stub Length

000	0 Feet
025	25 Feet
100	100 Feet
200	200 Feet
300	300 Feet
500	500 Feet

Cable Type

Pigtails	
A	Bare ribbon pigtail assy
B	12 Fiber Soft-Walled Bundle*
Stubs	
S	Ribbon OSP w/Conn
R	Ribbon IFC w/Conn
T	Loose Tube OSP w/Conn
V	Loose Tube IFC w/Conn

* 900 micron fiber bundled in a soft jacket.

Specifications

	FDT-A	FDT-B	FDT-C	FDT-D	FDT-E
Installation Type:	Indoor	Indoor	Indoor	Indoor	Indoor
Fibers:	12	24	48	72	96
Splice Trays:	1 Tray	2 Trays	4 Trays	6 Trays	8 Trays
Cable Ports:	2 Top; 2 Bottom	2 Top; 4 Bottom	2 Top; 4 Bottom	2 Top; 4 Bottom	2 Top; 4 Bottom
Rating:	NEMA-12	NEMA-12	NEMA-12	NEMA-12	NEMA-12
Height:	7.25"	8"	18.75"	23.6"	32.5"
Width:	11.8"	14"	14.5"	14.56"	14.7"
Depth:	3.25"	5"	5"	5"	5"