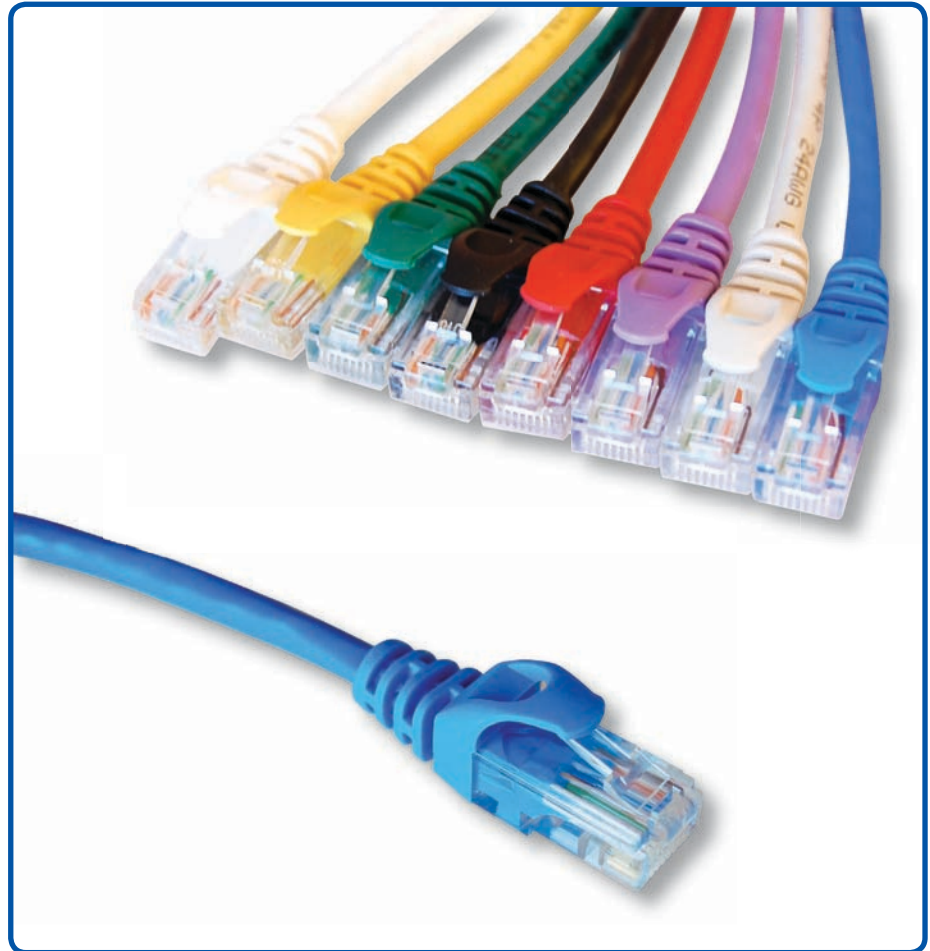


Applications

- Telecommunications
- CATV
- LAN & WAN
- Broadband
- FTTP

Features and Benefits

- All cables tested to industry standards
- Available in both straight or crossover pinning
- Lifetime Warranty
- Custom colors and lengths available upon request



Description

Wirewerks' copper patch cords are available in category 5E, category 6, and cross-over configurations. Wirewerks is one of only a few suppliers to fully test each and every patch cord for correct continuity, NEXT, and reflection loss within TIA requirements. They are 4 pair 24 AWG stranded (Cat6) cables with snag-less molded connectors and integral strain

relief. Pins are plated with 50um of gold. The bandwidth of these products is 350 MHz.

Ordering Information



A - TIA Spec

- 5E = Cat5E
- 5C = Cat 5e X Over
- 06 = Cat 6
- 6E = Cat 6e
- 6C = Cat 6 X Over

B - Configuration

A= 568A

C - Colour

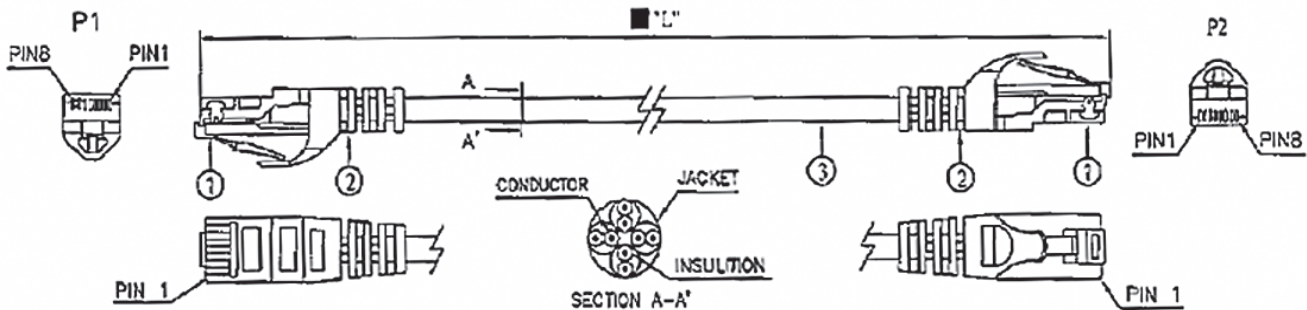
- GY = Gray
- BL = Blue
- BK = Black
- OG = Orange
- WH = White
- GR = Green
- YL = Yellow
- RD = Red
- PR=Purple

D - Length in F

XXX = XXX feet

Specifications

5



Item	Description
Standards	C(UL) and UL certified to meet EIA/TIA 568-A.4
	EIA/TIA 568A and B compatibility available
	ISO/IEC 11801 Compliant
Bandwidth	350 MHz ; Cat 6-550 MHz