

SPLIT DUCT

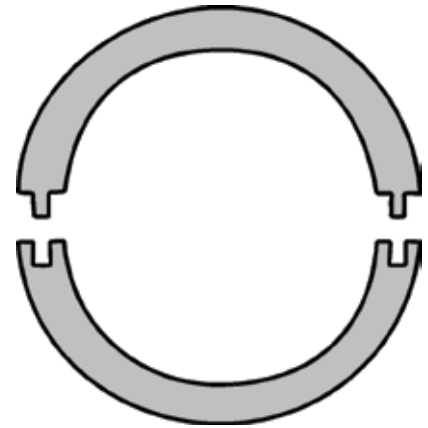
Split Duct is the fast and easy way to repair broken ductwork without the costly cutting and resplicing of your conductors.

The unique tongue-and-groove design provides a strong, rigid solution for duct repair situations.

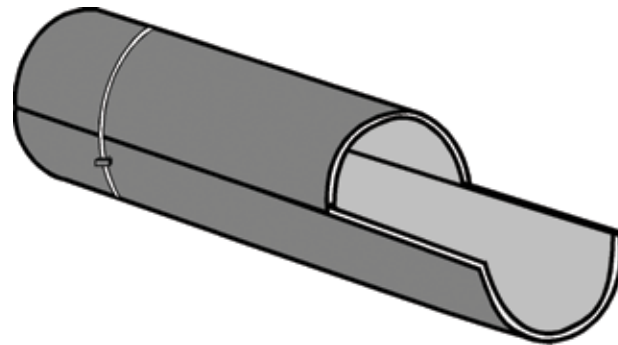
The interlocking design allows the split duct sections to be staggered and butted together. Joints may be sealed with tape and reinforced with plastic or metallic straps to produce a rigid, stable unit.

Manufactured from a compound designed specifically for power and telecommunications applications. Split Duct exhibits superior impact strength and ultraviolet resistance.

Available in 2" through 6" diameters, this product line also contains couplings and sweeps necessary to complete the system.



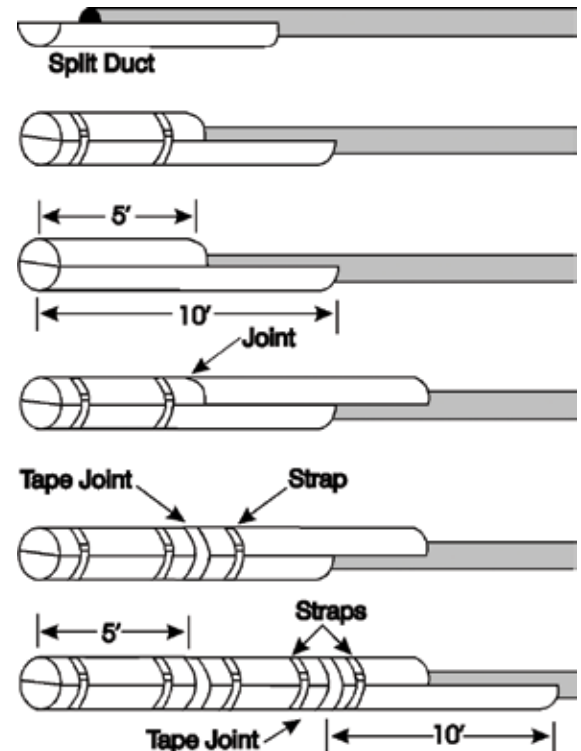
The fast and easy method of installing duct around existing cable for repair and temporary installations.



SPLIT DUCT

RECOMMENDED INSTALLATION PROCEDURE

1. Place one 10-foot Split Duct section under cable.
2. In order to stagger joints, saw another section in half (about 5 feet long).
3. Place 5-foot section over cable and snap the two sections together.
4. Place strap about one foot from the end and another strap about a foot from the joint where the ends of the top sections will butt.
5. Place another 10-foot Split Duct section over the open half of the bottom section, butt the ends tightly together and snap the sections together.
6. Place a length of tape around both sections of the Split Duct to cover the butted joint.
7. Place a strap about one foot beyond the taped joint.
8. Lay another length of Split Duct underneath cable, butt together, tape the butted joint and strap one foot on each side of the joint.
9. Repeat procedure.



SPLIT DUCT

SPLIT DUCT

Description	Std. Ctn. Qty.	Std. Ctn. Wt. (lbs.)	O.D.
Schedule 40			
2" Schedule 40 Split Duct	700	564	2.375
2-1/2" Schedule 40 Split Duct	460	572	2.875
3" Schedule 40 Split Duct	500	857	3.500
3-1/2" Schedule 40 Split Duct	290	569	4.000
4" Schedule 40 Split Duct	290	701	4.500
5" Schedule 40 Split Duct	230	751	5.563
6" Schedule 40 Split Duct	130	548	6.625
Schedule 80			
2" Schedule 80 Split Duct	700	749	2.375
4" Schedule 80 Split Duct	290	922	4.500
C Duct			
4" C Duct Split Duct	320	614	4.350

SPLIT SLEEVE COUPLING

Size	Description	Length	Split	Std. Ctn. Qty.	Std. Ctn. Wt. (lbs.)
Schedule 40 & 80					
2"	Split Coupling	6"	1	25	9
2-1/2"	Split Coupling	7"	1	25	21
3"	Split Coupling	7"	1	25	17
3"	Split Coupling	6.5"	2	25	10
3-1/2"	Split Coupling	8"	1	25	20
4"	Split Coupling	8"	1	15	16
4"	Split Coupling	6"	2	25	17
5"	Split Coupling	8"	1	15	25
5"	Split Coupling	9"	1	8	12
6"	Split Coupling	10"	1	6	17
C Duct					
4"	C Duct Split Coupling	8"	1	15	19
4"	C Duct Split Coupling	6"	1	25	24

SPLIT DUCT SWEEPS

Segment	Nom. Size	Radius (in.)	Std. Ctn. Qty.	Std. Ctn. Wt. (lbs.)
45° Sweep	2"	24"	1	1.4
	2"	36"	1	2.1
	3"	36"	1	4.7
	2"	48"	1	2.7
	3"	48"	1	6.1
	2"	60"	1	3.2
	3"	60"	1	7.2
	4"	60"	1	10.2
	22-1/2° Sweep	4"	60"	1
11-1/4° Sweep	2"	60"	1	1
	3"	60"	1	3.6
	4"	60"	1	5.1

Two 45° Elbows may be segmented for 90°.