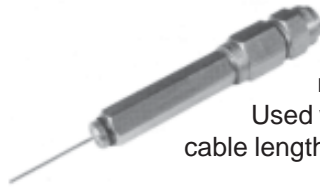
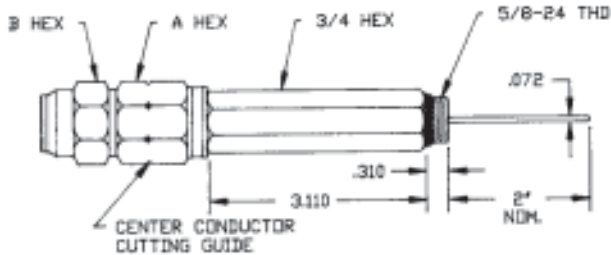


Two Piece Entry Extension



5/8"-24 entry connector with integral mandrel and nominal 3 inch extension.

Used when additional cable length is required.



Part Number	Cable Group (*)	Center Cond.	Cable O.D.	Dimension	
				A	B
EI412KLB	A	.080	.412	13/16	7/8
EI412K3LB	E,J	.092	.412	13/16	7/8
EI440MC2LB	I	.105	.450	1	1
EI500KLB	A	.100	.500	1	1
EI500K3LB	E, J	.109	.500	1	1
EI500MC2LB	I	.123	.510	1	1
EI500QRLB	H	.117	.580	1	1
EI540QRLB	H	.124	.610	1	1
EI565TXLB	G	.129	.565	1	1
EI625K3LB	E	.137	.625	1	1
EI650MC2LB	I	.156	.640	1-1/8	1-1/8
EI700TXLB	G	.163	.703	1-1/8	1-1/8
EI715QRLB	H	.166	.785	1-3/16	1-3/16
EI750KLB	A	.148	.750	1-1/8	1-1/8
EI750K3LB	E	.167	.750	1-1/8	1-1/8
EI750MC2LB	I	.185	.760	1-1/8	1-1/8
EI840TXLB	F	.194	.840	1-3/8	1-3/8
EI860QRLB	H	.203	.960	1-1/2	1-1/2
EI875K3LB	E	.194	.875	1-3/8	1-3/8
EI1000K3LB	E	.220	1.000	1-1/2	1-1/2
EI1000MC2LB	I	.248	1.015	1-1/2	1-1/2
EI1125QRLB	H	.263	1.225	1-3/4	1-3/4
EI1160TXLB	G	.269	1.160	1-3/4	1-3/4

Cable Group Chart

Manufacturer	Cable Types
Cable Group A	
CCS Hatfield	GID I*, Chema Foam*
Cerro	GX™*, Polyethylene™*
CommScope	Parameter I®*, Alumagard®*
Systems	11& 12*, 21 &22*
Times	Alumifoam®*, Alumifoam II®*
Cable Group B	
Cerro	Cerrofoam™*
CommScope	Cell-O-Air®*
Times	Dynafoam™*, Dynaplus™*
Cable Group C	
General Cable	Fused Disc I™*, II™*
Cable Group D	
CommScope	Parameter II®*
Cable Group E	
CCS Hatfield	GID III*
Cerro	GXX™*
CommScope	Parameter III
Scientific Atlanta	GID III*
Systems	31 & 32*
Times	Alumifoam III™*, T4™, T4+™, T6™, T10™
Capscan	4*
Cable Group F	
Scientific Atlanta	Cable Flex
Cable Group G	
Times	TX™
Cable Group H	
CommScope	Quantum Reach®
Cable Group I	
Trilogy	MC2
Cable Group J	
General Cable	Fused
Cable Group K	
General Cable	Fused Disc Metric III™*