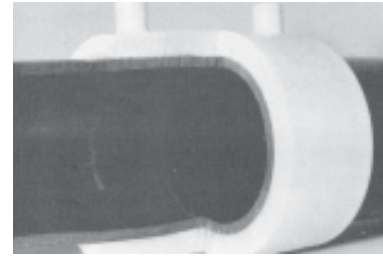


Vikimatic Electrofusion

The Electrofusion System offers you an external slip connection fitting made from polyethylene. That means a *non-metallic, non-corrosive joint* for longer connection life. With the Electrofusion System, you get a *heat fused joint* that is pressure tight. In fact, tests have shown these joints to have a stronger tensile strength than that of the pipe itself. The Electrofusion System requires a minimal working area and there is no lateral movement of pipe required for joining.



I. PE to PE - Electrofusion has been used to join PE pipe for over 30 years. The joint strength has been tested for three (3) different joint performances.

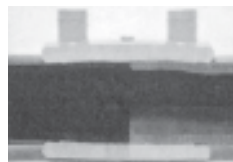
1. Tensile Strength of the fusion has been proved to be stronger than pipe yield strength.
2. Pressure strength of the fusion has been proven to be stronger than the burst strength of the pipe. Joints have been tested at 340 lbs. pressure for over 38,000 hours.
3. The bond strength of the fusion has been proven under crush test to be stronger than the pipe itself.

II. PE to PVC - This is a new concept for very specialized applications. The PE does not fuse to the PVC. The joint strength is achieved by the thermal expansion of both plastics at the interface when heated. Both the PE and PVC pipe have been prepared by a serrated scraping tool creating grooves .015" deep. The PE of the coupling melts into the serrations of the PVC. The thermal expansion of both the PE and PVC creates a very tight compression.

1. Tensile strength has been tested on 2" SDR-11 PE3408 to 2" Schedule 40 PVC, resulting in the PE yielding at 3,842 lbs. of tensile. Test on 2" Schedule 40 PE3408 to 2" DB-120 PVC resulted in the PE yielding at 2,900 lbs. of tensile.
2. Pressure strength has been tested successfully at 20 psi for 24 hours. This test was to ensure a water tight seal. This joint is not to be considered a pressure rated connection.
3. Bond strength between the PE and PVC, when sectioned, is non-existent. Upon viewing the sections, it is apparent that the serrations in the PVC have created an anchor pattern. The PE from the coupling has molded into this anchor pattern and appears to have a biting affect, but when impacted the two will separate.



Description	Part No.
Auto-sequence Processor (With 15' Leads)	575-0340
Additional Leads (15' Detachable)	575-0332
Additional Leads	575-0283
Power Adapter (Pigtail) (25' Detachable)	900-0643



Reducers

Nominal Size (in.)	Part No.
3/4" x 1/2" CTS	575-0080
1" x 1/2" CTS	575-0081
1" x 1/2" IPS	575-0082
1" x 3/4" IPS	575-0083
1" x 1" CTS	575-0084
1" x 1-1/4" CTS	575-0089
3" x 2-1/2" CTS	575-0088



Scrapers

Nominal Size (in.)	Part No.
1-1/4" IPS	575-2120
2" IPS	575-2118
3" IPS	575-2122
4" IPS	575-2119
6" CTS	575-0127



Vice Grip

Nominal Size (in.)	Part No.
1-1/4" IPS	575-2001
2" IPS	575-2039